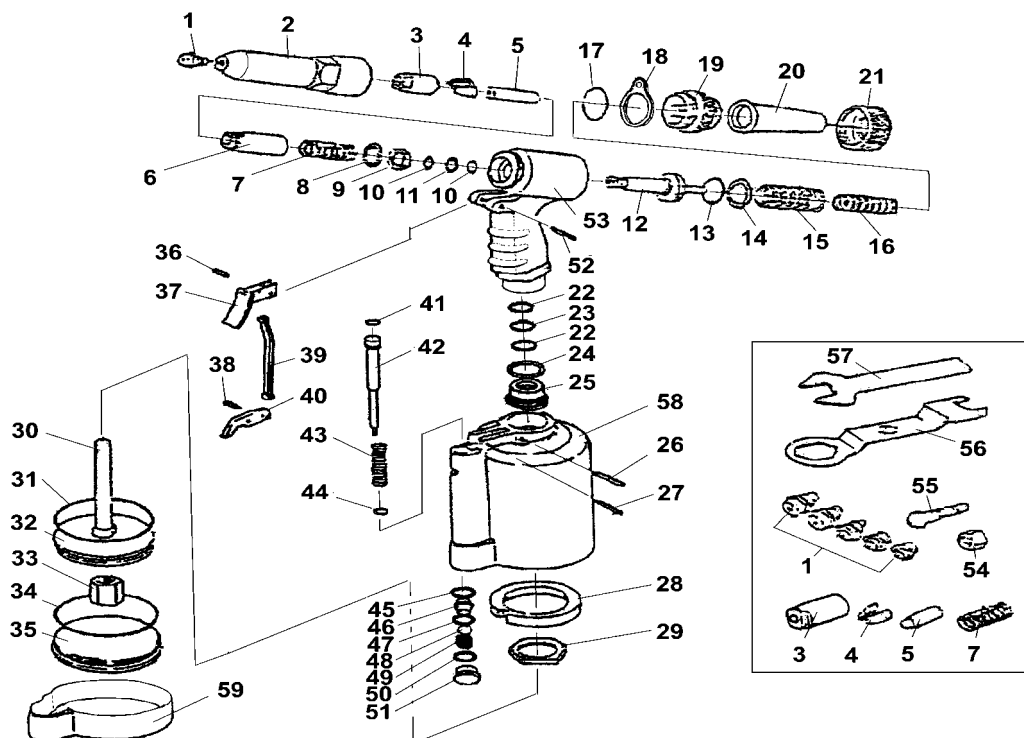


## Instructions and Parts List - #39058 M-4 AIR / HYDRAULIC RIVETER TOOL



| Ref. No. | Part No. | Description                             | Qty. | Ref. No. | Part No. | Description           | Qty. | Ref. No. | Part No. | Description  | Qty. |
|----------|----------|---|------|----------|----------|-----------------------|------|----------|----------|--|------|
| 1A       | 95835    | Nosepiece 1/4" (6.4mm)                  | 1    | 16       | 95854    | Return Spring (Small) | 1    | 41       | 95878    | Valve Pusher O-Ring  | 1    |
| 1B       | 95897    | Nosepiece 3/32" (2.4mm)                 | 1    | 17       | 95780    | Frame Cap O-Ring 27x2 | 1    | 42       | 95879    | Valve Pusher   | 1    |
| 1C       | 95898    | Nosepiece 1/8" (3.2mm)                  | 1    | 18       | 95855    | Hanging Clip          | 1    | 43       | 95880    | Valve Spring   | 1    |
| 1D       | 95899    | Nosepiece 5/32" (4.0mm)                 | 1    | 19       | 95856    | Frame Cap             | 1    | 44       | 95881    | Collar O-Ring  | 1    |
| 1E       | 95900    | Nosepiece 3/16" (4.8mm)                 | 1    | 20       | 95857    | Safety Cap            | 1    | 45       | 95882    | O-Ring   | 1    |
| 2        | 95836    | Frame Head                              | 1    | 21       | 95858    | Frame Cap Nut         | 1    | 46       | 95883    | Valve  | 1    |
| 3A       | 95838    | Jaw Case Front for 1/4", 3/16"          | 1    | 22       | 95859    | O-Ring                | 2    | 47       | 95884    | O-Ring   | 1    |
| 3B       | 95837    | Jaw Case Front (for 3/32", 1/8", 5/32") | 1    | 23       | 95860    | Back Up Ring          | 1    | 48       | 95885    | Steel Ball   | 1    |
|          |          |   |      | 24       | 95861    | O-Ring                | 1    | 49       | 95886    | Valve Spring   | 1    |
| 4A       | 95839    | Jaws for 1/4", 3/16"                    | 1set | 25       | 95862    | Hydraulic Rod Guide   | 1    | 50       | 95887    | O-Ring   | 1    |
| 4B       | 95840    | Jaws for 5/32", 1/8", 3/32"             | 1set | 26       | 95863    | Frame Setting Pin     | 1    | 51       | 95888    | Valve Cap  | 1    |
| 5A       | 95841    | Jaw Pusher for 1/4", 3/16"              | 1    | 27       | 95864    | Lever Pin             | 1    | 52       | 95889    | Handle Pin   | 1    |
| 5B       | 95842    | Jaw Pusher for 3/32", 1/8", 5/32"       | 1    | 28       | 95865    | Rubber Cushion        | 1    | 53       | 95890    | Frame  | 1    |
| 6        | 95843    | Jaw Case Rear                           | 1    | 29       | 95866    | Frame Lock Nut        | 1    | 54       | 95891    | Inlet Bushing Nut  | 1    |
| 7A       | 95845    | Jaw Pusher Spring 1/4", 3/16"           | 1    | 30       | 95867    | Air Piston Stem       | 1    | 55       | 95892    | Inlet Bushing  | 1    |
| 7B       | 95844    | Jaw Push Spring 5/32", 1/8", 3/32"      | 1    | 31       | 95868    | O-Ring 69.6x5.7       | 1    | 56       | 95893    | Spanner  | 1    |
| 8        | 95846    | Case Washer Ring                        | 1    | 32       | 95869    | Air Piston            | 1    | 57       | 95894    | Spanner Gauge  | 1    |
| 9        | 95847    | Case Lock Nut                           | 1    | 33       | 95870    | Air Piston Lock Nut   | 1    | 58       | 95895    | Air Cylinder   | 1    |
| 10       | 95848    | O-Ring 11.8x2.4                         | 2    | 34       | 95871    | O-Ring 73x2.8         | 1    | 59       | 95896    | Rubber Cushion   | 1    |
| 11       | 95849    | Back Up Ring                            | 1    | 35       | 95872    | Cylinder Cap          | 1    | RK       | 95901    | Repair Kit Ref.No. -- 4(L), 4(S), 7(1/4"), 7(5/32"), 14, 15, 16, 17          | 1    |
| 12       | 95850    | Oil Piston                              | 1    | 36       | 95873    | Connector             | 1    |          |          |  |      |
| 13       | 95851    | O-Ring 23.7x3.5                         | 1    | 37       | 95874    | Trigger               | 1    | SK       | 95902    | Service Kit Ref.No.-- 10(X2), 11, 13, 17, 31, 34, 41, 43, 44, 45, 47, 49, 50 | 1    |
| 14       | 95852    | Back Up Ring                            | 1    | 38       | 95875    | Connector             | 1    |          |          |  |      |
| 15       | 95853    | Return Spring (Large)                   | 1    | 39       | 95876    | Trigger Rod           | 1    |          |          |  |      |
|          |          |   |      | 40       | 95877    | Trigger Lever         | 1    |          |          |  |      |