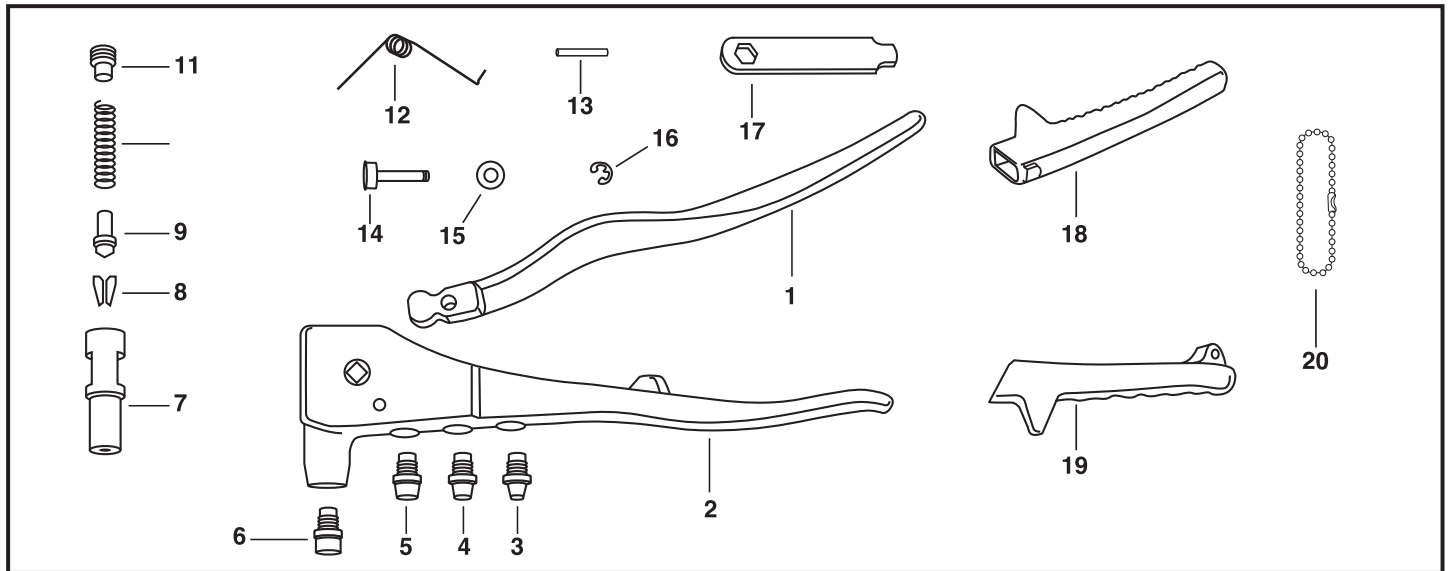


GOEBEL GO-2 Industrial HAND RIVET TOOL

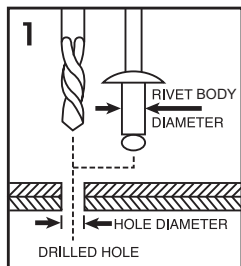
PARTS LIST



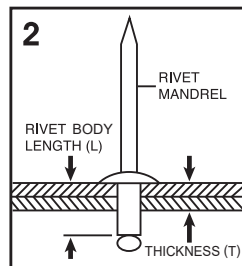
NO.	PART NO.	PART NAME	NO.	PART NO.	PART NAME
1	GO-2-01	Upper Handle	11	GO-2-11	Retaining Screw
2	GO-2-02	Aluminum Body	12	GO-2-12	Torsion Spring
3	GO-2-03	Nosepiece, 2.4mm or 3/32"	13	GO-2-13	Torsion Spring Pin
4	GO-2-04	Nosepiece, 3.0/3.2mm or 1/8"	14	GO-2-14	Fulcrum Pin
5	GO-2-05	Nosepiece, 4.0mm or 5/32"	15	GO-2-15	Fulcrum Pin Bearing
6	GO-2-06	Nosepiece, 4.8/5.0mm or 3/16"	16	GO-2-16	Snap Ring
7	GO-2-07	Jaw Case	17	GO-2-17	Wrench
8	GO-2-08	Jaws (2-pc Type)	18	GO-2-18	Upper Grip with Shock Absorber
9	GO-2-09	Jaw Pusher	19	GO-2-19	Lower Grip, Bead Chain Type
10	GO-2-10	Jaw Pusher Spring	20	GO-2-20	Bead Chain Lock

NOTES: Please order parts by Part Number and Part Name. Keep all moving parts oiled.

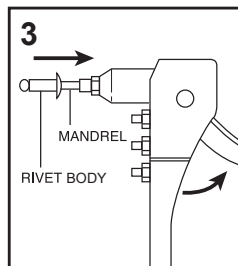
OPERATION INSTRUCTIONS



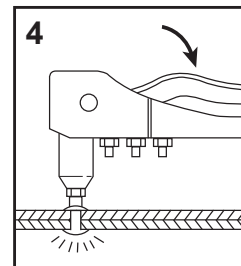
Select appropriate Rivet for application and drill same size or a little bigger (0.1mm, 0.004") hole through workpieces to be fastened.



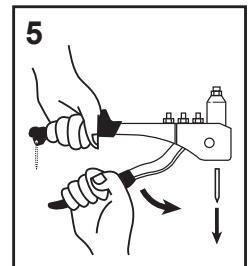
Select Rivet Body Length (L) based on the combined thickness (T) of workpieces to be fastened. It is suggested $L - T \geq 4.0\text{mm}$ or $0.16"$.



Open Tool Handles fully and insert Rivet Mandrel all the way into Tool Working Nosepiece.

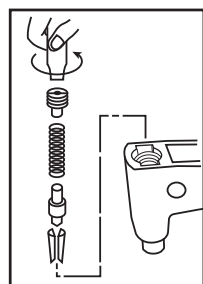


Insert Rivet Body into the drilled hole completely. Squeeze Tool Handles until Rivet Mandrel breaks off. If more than one squeeze is required, open Tool Handles fully, push Rivet to touch Nosepiece and squeeze again.

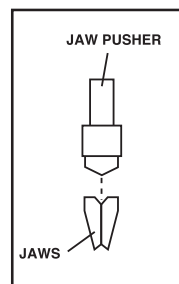


Finally open Tool Handles fully to eject spent Mandrel from Tool, either from Working Nosepiece or from another side.

HOW TO CHANGE JAWS, ETC. PARTS



1. Close Tool Handles completely.
2. Remove Retaining Screw with Wrench, then remove Jaw Pusher Spring, Jaw Pusher and Jaws from Jaw Case.
3. Clean or replace Jaws, lubricating outside of Jaws with light machine oil before re-assembly.



4. Reverse the above steps to reassemble, making sure that bevelled end of Jaw Pusher fits into the bevel provided by the Jaws.

WARNINGS

