

**SP-1 Klik-Turn™ Swivel Head Rivet Tool
No. 39005**

SP-1 Will Set All of the Klik-Fast® Listed Below

Rivet Body	Mandrel	3/32	1/8	5/32	3/16
Aluminum	Aluminum	*	*	*	*
Aluminum	Steel	*	*	*	*
Copper	Steel		*		
Steel	Steel	*	*	*	*
Stainless	Steel		*	*	
Stainless	Stainless		*	*	

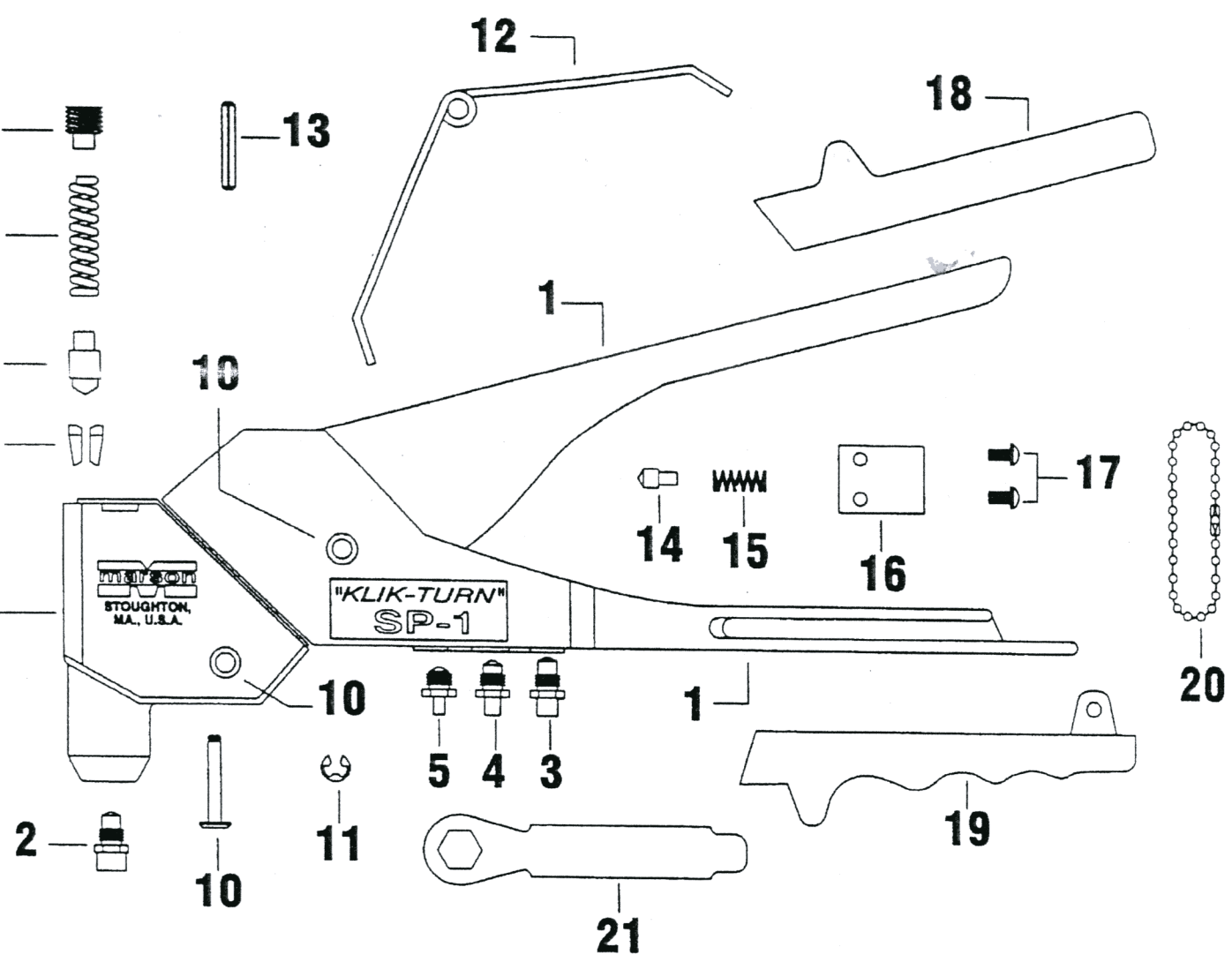
OPERATING INSTRUCTIONS

1. Open handles completely. Insert pointed end of mandrel into tool until rivet flange bears against face of nosepiece.
2. Turn Swivel Head to desired riveting position.
3. Insert rivet into hole of unit to be riveted.
4. With bottom face of rivet flange and outer surface of unit to be riveted in direct contact, squeeze the handle down until rivet mandrel is snapped free.
5. If two strokes are needed to set the rivet, the handle must be opened completely and the tool moved down so that the nosepiece is again in contact with the rivet flange. The handle is squeezed once again until mandrel is snapped free.
6. To clear tool of snapped mandrel, open handles completely. This will allow mandrel to drop out of either end of tool.

CAUTION: To prevent possible injury, tool must be clear of all snapped mandrels before setting next rivet. ALWAYS WEAR SAFETY GOGGLES.

TO CHANGE JAWS

1. Close handles completely, keeping them closed with Locking Chain (20).
2. Remove retaining screw (9) with wrench (21), remove Jaw Pusher Spring (8), Jaw Pusher (7), and Jaws (6) from Tool.
3. Clean or replace Jaws (6) greasing outside of Jaws before reassembly.
4. To reassemble, reverse the above instructions



MARSON SP-1 PARTS LIST

No.	Part No.	Part Name
1	39161	Body (3-in-1)
2	39162	3/16" Nosepiece
3	39163	5/32" Nosepiece
4	39164	1/8" Nosepiece
5	39165	3/32" Nosepiece
6	39166	Jaws, 2-pc set
7	39167	Jaw Pusher
8	39168	Jaw Pusher Spring
9	39169	Retaining Screw
10	39170	Fulcrum Pin (Note: Not seen in breakdown)
11	39171	Snap Ring
12	39172	Torsion Spring
13	39173	Torsion Spring Pin
14	39174	Slideable Gear Lock
15	39175	Slideable Gear Lock Spring
16	39176	Plate
17	39177	Bolt, for Plate (set)
18	39178	Upper Grip
19	39179	Lower Grip
20	39180	Locking Chain, for Lower Grip
21	39181	Wrench