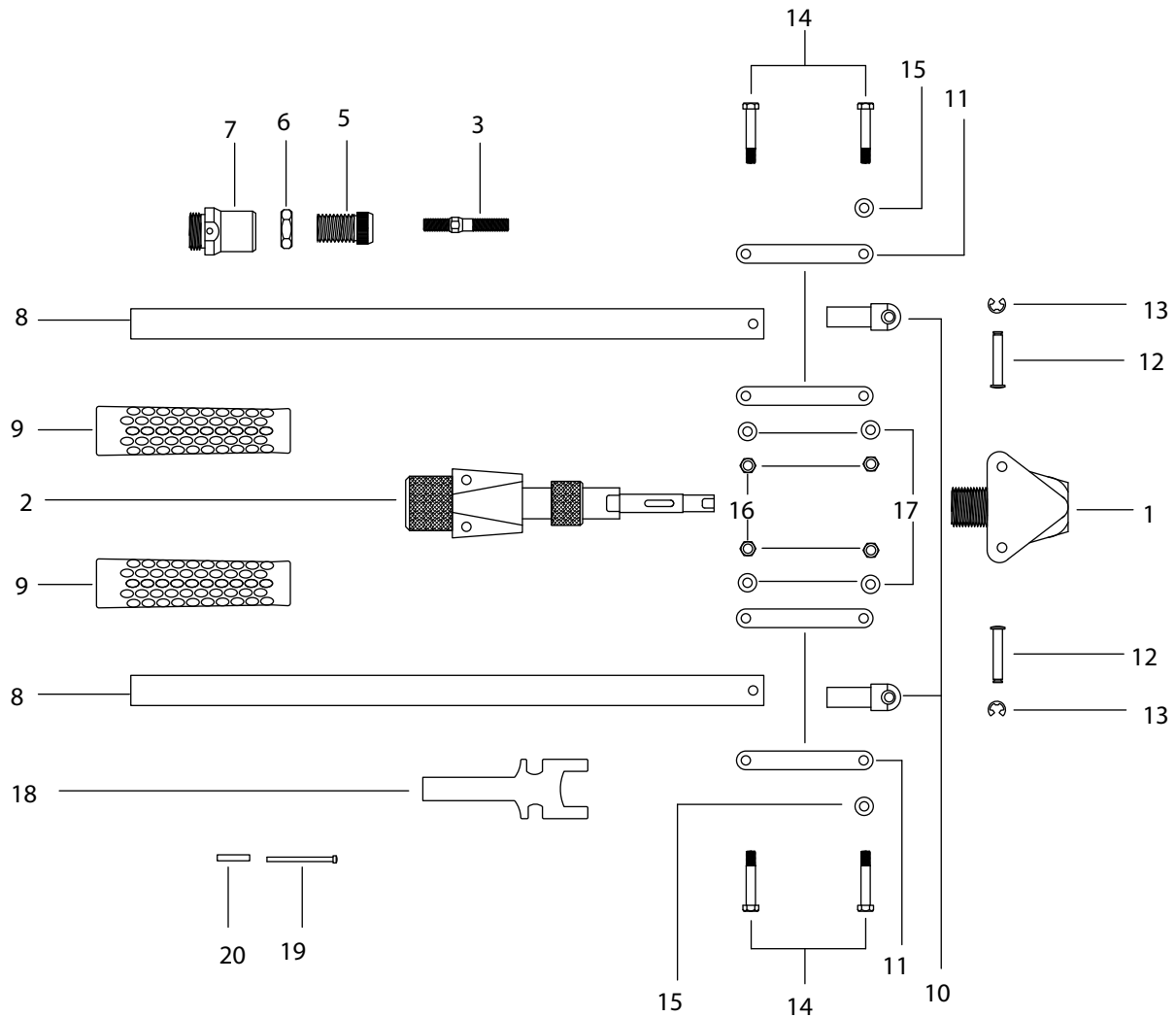


325RN Lever Thread Setting Tool/34604



REF.	MARSON#	DESCRIPTION	REF.	MARSON#	DESCRIPTION
1	95601	FRONT BODY	12	95612	LONG PIN
2	95602	EASY TURN UNIT, COMPLETE SET	13	95613	RETAINING RING
3	95630	M5x0.8 MANDREL	14	95614	SHORT BOLT PIN
	95631	M6x1.0 MANDREL	15	95615	WASHER, 12x6
	95632	M8x1.25 MANDREL	16	95616	NYLON NUT
	95633	M10x1.5 MANDREL	17	95617	WASHER
	95635	10-24 MANDREL	18	95618	SERVICE WRENCH
	95636	10-32 MANDREL	19	95619	FIXING-HOLE PIN
	95637	1/4-20 MANDREL	20	95620	PIN RETAINER
	95638	5/16-18 MANDREL			
	95639	3/8-16 MANDREL			
5	95640	M5 NOSEPIECE	34610		COMPLETE SET UN INCH MANDRELS & NOSEPIECE
	95641	M6 NOSEPIECE	34613		COMPLETE SET METRIC MANDRELS & NOSEPIECE
	95642	M8 NOSEPIECE	34615		10-24 MANDREL & NOSEPIECE
	95643	M10 NOSEPIECE	34616		10-32 MANDREL & NOSEPIECE
	95645	SIZE 10 NOSEPIECE	34617		1/4-20 MANDREL & NOSEPIECE
	95647	1/4 NOSE PIECE	34618		5/16-18 MANDREL & NOSEPIECE
	95648	5/16 NOSEPIECE	34619		3/8-16 MANDREL & NOSEPIECE
	95649	3/8 NOSEPIECE	34625		5mm MANDREL & NOSEPIECE
6	95606	NOSEPIECE LOCKNUT	34626		6mm MANDREL & NOSEPIECE
7	95607	HEAD	34627		8mm MANDREL & NOSEPIECE
8	95608	HANDLE	34628		10mm MANDREL & NOSEPIECE
9	95609	GRIP	95621		STEEL CARRYING CASE
10	95610	JOINT	95622		MANDREL/NOSEPIECE PLASTIC CONTAINER
11	95611	CONNECTING BAR	95623		SMALL RULE