

BP-350Qc AIR RIVET NUT TOOL

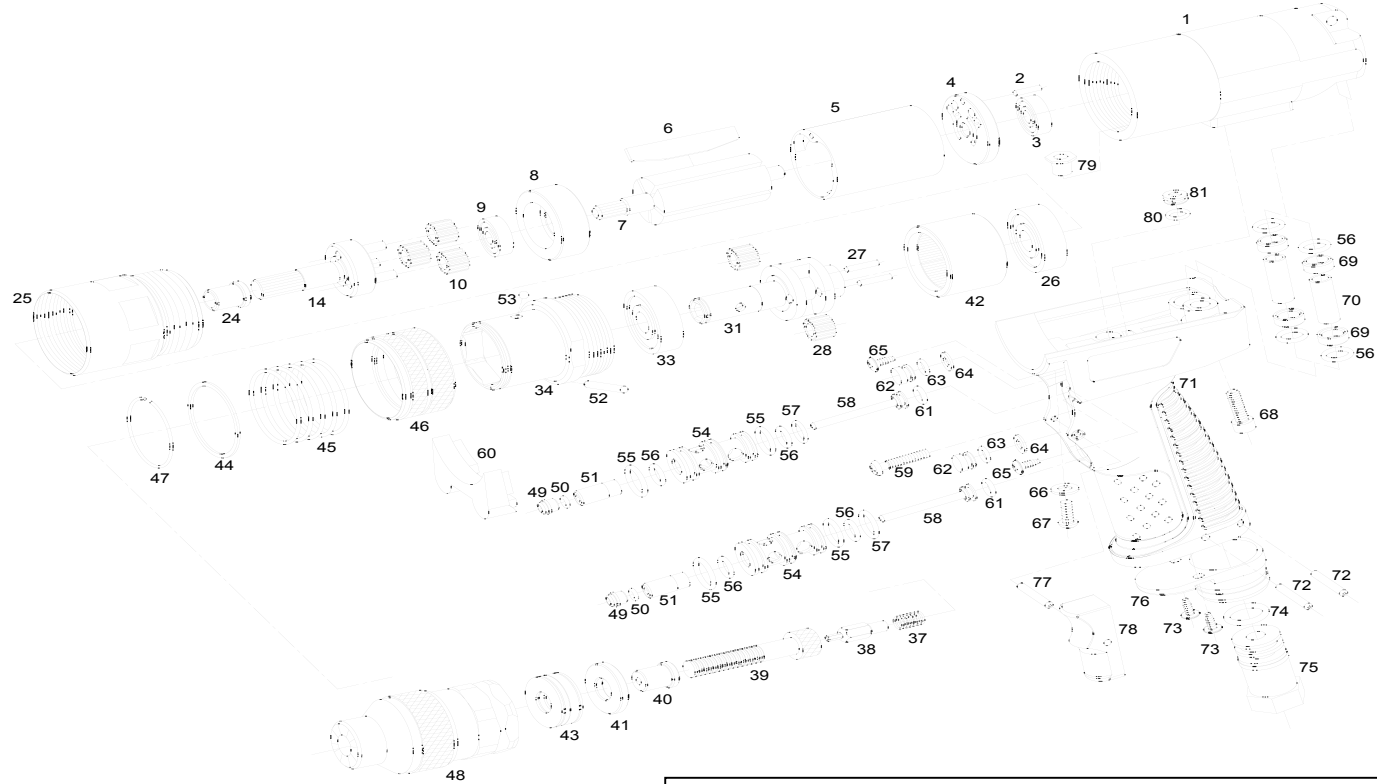
Quick Change Head

SPECIFICATIONS

Max. Rivet Nut Setting Capacity.....	3/8, M10
Max. Speed.....	360RPM
Weight.....	1.25KG/
Avg. Air Consumption.....	5 CFM
Air Inlet.....	1/4"NPTF
Mini-Hose Size.....	3/8"
Sound Pressure.....	86DBA
Vibration.....	<2.5 M/S ²



THE FUSION OF PRODUCTION
AND TECHNOLOGY



Quick change head ass'y for any size includes
#48, #43, #41, #40, #39, #38, #37

Index No.	Part No.	Description	Index No.	Part No.	Description	Index No.	Part No.	Description
1	300360	Motor Housing		M08125	Bolt M8,	58	30007	Valve stem (2)
2	P2514	Spring Pin		M10015	Bolt M10	59	BSM5X25	Screw
				W14020	Bolt 1/4-20			
				W51618	Bolt 5/16-18			
				W03816	Bolt 3/8-16			
3	25004	Ball Bearing	40	60096	Bushing M6	60	30059	Rubber Cap
				6009614	Bushing 1/4			
4	300114	Rear Plate	41	60063	Washer M6,1/4	61	R5X19	O-Ring (Ø5X1.9) (2)
5	300109	Cylinder		35063	Washer M8,5/16,3/8	62	30086	Plug (2)
6	300107	Rotor Blade (6)	42	35012A	Internal Gear	63	R5X15	O-Ring(Ø5X1.5) (2)
7	300102	Rotor	43	35065	Needle Bearing M6,M8	64	R8X65X16	Washer(Ø8X6.5x1.6) (2)
				35065	Needle Bearing 1/4,5/16			
				B51100	Ball Bearing M10,3/8	65	WS3X10	Screw (2)
8	300108	Front Plate	44	60032	Washer	66	300W5	Washer
9	608	Ball Bearing	45	60076	Spring	67	BSM5X12	Screw
10	35018B	Planet Gear(18T)(3)	46	60072	Q-chang Clamp	68	HSM5X20	Screw
14	60011A	Planet Cage	47	60075	Ring	69	30011	Bushing (4)
24	90016A	Bushing	48	600M6	Nut Anvil M6	70	30025	Tube (2)
25	300115	Housing		600M8	Nut Anvil M8	71	30003	Handle
26	35060	Ball Bearing		600M10	Nut Anvil M10	72	SP3X25	Roll Pin (2)
27	35059	Planet Pin (2)		600N14	Nut Anvil 1/4"			
				600N518	Nut Anvil 5/16"			
				600N	Nut Anvil 3/8"			
28	90014B	Planet Gear(14T) (2)	49	300061	Sleeve Bushing (2)	73	WS3.5X15	Screw (2)
31	90010W	Planet Cage	50	R3-2X13	O-Ring(Ø3.2X1.3) (2)	74	25203	O-ring(P12X2.4)
33	35069	Ball Bearing	51	30006	Sleeve (2)	75	30018	Air Inlet Bushing
34	60074	Q-chang Housing	52	35029	Pin	76	30027	Diffuser Exhaust
37	35076	Spring	53	60053	Steel Ball	77	SP2.5X20	Pin
38	600006	Hexagon Bit M6	54	30005	Throttle Bushing (2)	78	30012	Trigger
	600008	Hexagon Bit M8	55	R115X2	O-Ring(Ø11.5X2) (4)	79	300M5	Nut
	600010	Hexagon Bit M10	56	R7X18	O-Ring(Ø7X1.8) (8)	80	R6X15	O-Ring(Ø6X1.5) (2)
	601420	Hexagon Bit 1/4-20						
	6051618	Hexagon Bit 5/16-18						
	603816	Hexagon Bit 3/8-16						
39	M06010	Bolt M6	57	R10X19	O-Ring(Ø10X1.9) (2)	81	30009	Plug (2)

*See BP-350Q or BP-600Q tool breakdowns for standard/fractional spare head assembly part #s.@ www.bluepneumatic.com