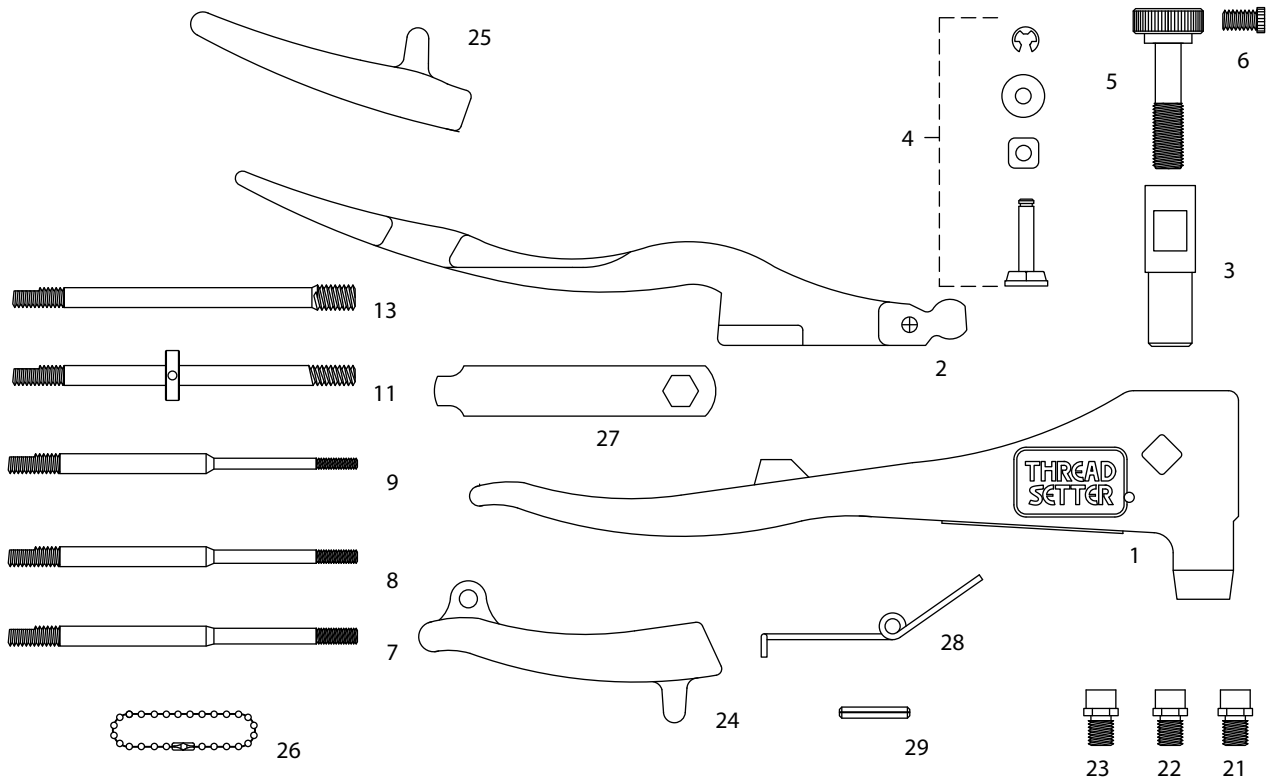


Thread-setter™/39200



REF.	PART NO.	DESCRIPTION	QTY./ASSEMBLY
1	39250	BODY	1
2	39121	HANDLE	1
3	39264	COLLET CASE	1
4	39127	FULCRUM PIN ASSEMBLY	1
5	39265	ADJUSTING KNOB ASSEMBLY W/ LOCK SCREW	1
6	39353	LOCK SCREW	R
7	39254	MANDREL FOR 6-32	OPTIONAL
8	39255	MANDREL FOR 8-32	1*
9	39256	MANDREL FOR 10-24	1*
-	39257	MANDREL FOR 10-32	1*
11	39258	MANDREL ASSEMBLY FOR 1/4-20	1+
-	39271	MANDREL ASSEMBLY FOR 1/4-28	OPTIONAL
13	39259	MANDREL FOR 5/16-18	OPTIONAL
-	39272	MANDREL FOR 5/16-24	1-
-	39360	MANDREL FOR 3/8-18	1-
-	39266	MANDREL FOR 4MM	1-
-	39267	MANDREL FOR 5MM	1-
-	39268	MANDREL FOR 6MM	OPTIONAL
-	39269	MANDREL FOR 8MM	OPTIONAL
-	39270	MANDREL FOR 10MM	1*
21	39261	NOSEPIECE FOR 6-32	1*
22	39262	NOSEPIECE FOR 8-32	1-
23	39263	NOSEPIECE FOR 10-24, 10-32	1-
-	39274	NOSEPIECE FOR 4MM	1
-	39273	NOSEPIECE FOR 5MM	1
24	39134	BODY GRIP	1
25	39135	HANDLE GRIP	1
26	39136	LOCKING CHAIN	1
27	39137	NOSEPIECE WRENCH	1
28	39132	TORSION SPRING	1
29	39133	TORSION SPRING RETAINING PIN	1

R = REPLACEMENT ONLY
 * = INDICATES PART FOUND IN 39200 AND 39202 KIT ONLY
 + = INDICATES PART FOUND IN 39202 ONLY
 - = INDICATES PART FOUND IN KIT 39203 ONLY
 EXTRA HOLES IN TOOL BODY HOLD NOSEPIECES WHEN NOT IN USE.

CAUTION: ALWAYS WEAR SAFETY GOGGLES WHEN USING THIS TOOL.