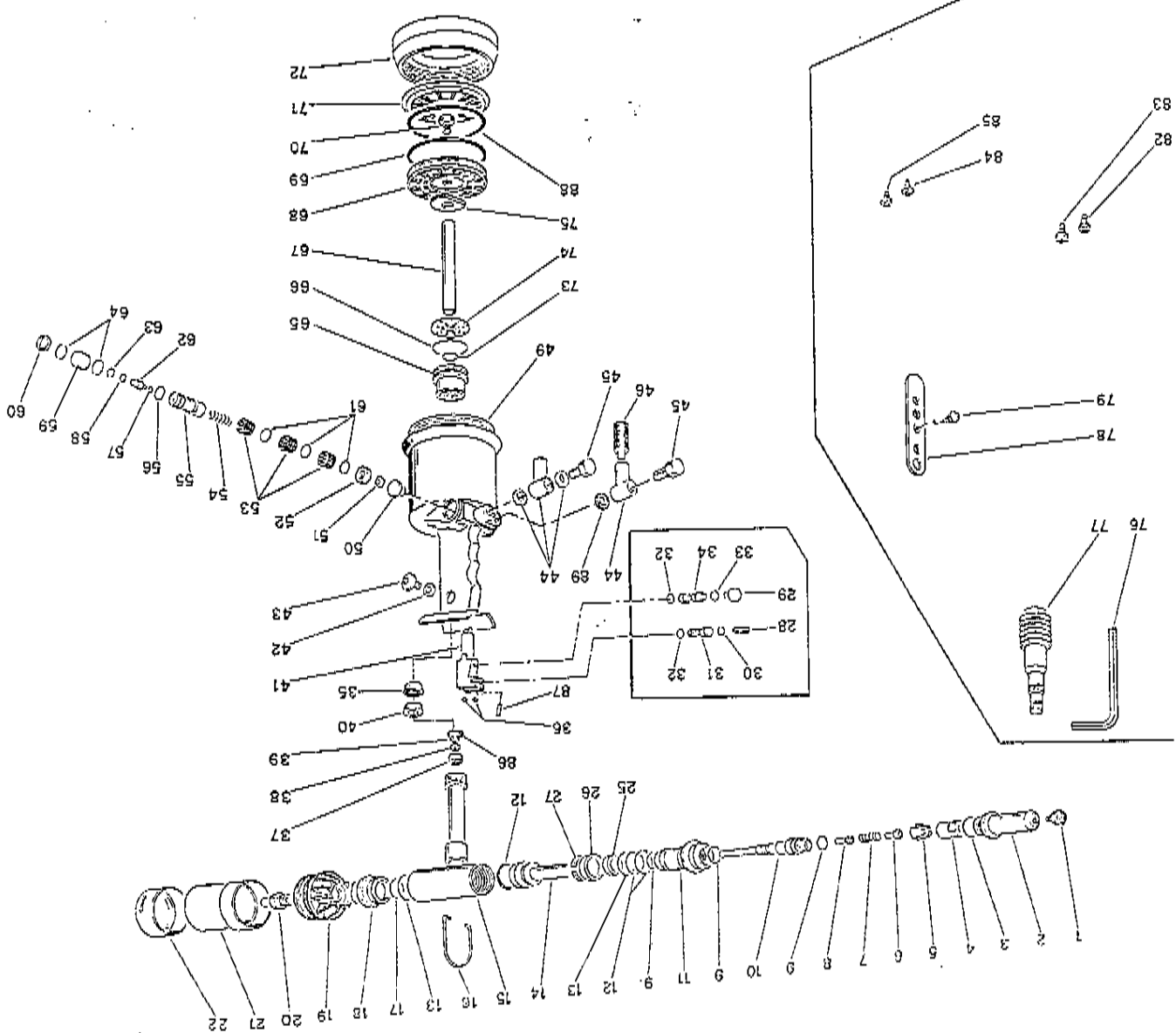


| RE-ORDER # | P/N | DESCRIPTION |
|------------|-----|---------------------------------|
| 88019 | 59 | VALVE PLUG |
| 88021 | 58 | OUTER VALVE PISTON O-RING 5-612 |
| 88220-36 | 57 | O-RING 2-6 |
| 88024 | 56 | COIL/FRAME O-RING 2-15 |
| 88025 | 55 | COIL |
| 88126 | 54 | REVERSE SPRING COIL |
| 88027 | 53 | CAGE |
| 88029 | 52 | VALVE SPACER |
| 88030 | 51 | WASHER STOP SPRING |
| 88220-50 | 50 | CAP |
| 88220-49 | 49 | CYLINDER |
| 88220-46 | 46 | SILFNCER |
| 88220-45 | 45 | CONNECTOR |
| CE-88038 | 44 | ROTATING CONNECTOR |
| 88035 | 43 | FLUID PLUG |
| 88034 | 42 | FLUID PLUG WASHER |
| 88220-41 | 41 | LONG VALVE BODY |
| 88220-40 | 40 | STEM GUIDE |
| 88020 | 39 | RETAINER RING |
| 88220-38 | 38 | CAP |
| 88220-37 | 37 | DAMPENER VALVE |
| 88220-36 | 36 | O-RING 2-8 |
| 88220-35 | 35 | GASKET |
| 88220-34 | 34 | VALVE PISTON |
| 88043 | 33 | TRIGGER O-RING 2-4 |
| 88047 | 32 | VALVE PISTON O-RING 2-5 |
| 88220-31 | 31 | VALVE PISTON |
| 88220-30 | 30 | O-RING 2-3 |
| 88018 | 64 | VALVE PLUG O-RING 018 |
| 88020 | 63 | RETAINER RING |
| 88022 | 62 | VALVE PISTON |
| 88028 | 61 | CAGE O-RING 2-115 |
| 88017 | 60 | RETAINER RING |
| 88220-69 | 69 | O-RING 2-343 |
| 88220-68 | 68 | AIR PISTON STOP |
| 88220-67 | 67 | AIR PISTON ROD |
| 88220-66 | 66 | O-RING 2-129 |
| 88220-65 | 65 | PISTON ROD CONNECTOR |
| 88220-71 | 71 | CYLINDER CAP |
| 88220-72 | 72 | STAND |
| 88327 | 73 | O-RING 2-113 |
| 88325 | 74 | DAMPENER |
| 88220-75 | 75 | WASHER PISTON |
| 88220-76 | 76 | ALLEN KEY |
| 88220-77 | 77 | OIL CONTAINER |
| 88220-78 | 78 | NOSEPIECE HOLDER |
| 88220-79 | 79 | 1/4" NOSEPIECE |
| 88220-82 | 82 | 3/16" STRUCTURAL NOSEPIECE |
| 88220-83 | 83 | 1/4" STRUCTURAL NOSEPIECE |
| 88220-84 | 84 | 1/4" MONOBOLT NOSEPIECE |
| 88220-85 | 85 | 3/16" MONOBOLT NOSEPIECE |
| 88220-86 | 86 | RETAINER RING |
| 88220-87 | 87 | PIN |
| 88220-88 | 88 | O-RING 2-45 |

| RE-ORDER # | P/N | DESCRIPTION |
|------------|-----|-------------------------------------|
| 88220-1 | 1 | 3/16" NOSEPIECE |
| 88220-2 | 2 | FRAME HEAD |
| 88220-3 | 3 | O-RING 2-21 |
| 88220-4 | 4 | FRONT JAW CASE |
| 88220-5 | 5 | JAWS |
| 88220-6 | 6 | JAW PISTON |
| 88026 | 7 | SPRING COIL |
| 88220-8 | 8 | VACUUM TUBE |
| 88220-9 | 9 | O-RING 2-114 |
| 88220-10 | 10 | CONE HOLDING HEAD |
| 88220-11 | 11 | REAR JAW CASE |
| 88220-12 | 12 | O-RING 2-121 |
| 88010 | 13 | LOWER AIR PISTON GUIDE O-RING 2-124 |
| 88220-14 | 14 | OIL PISTON |
| 88220-15 | 15 | FRAME |
| 88220-16 | 16 | BALANCER HOOK |
| 88022 | 17 | INTERNAL AIR PISTON O-RING 2-109 |
| 88220-18 | 18 | BACK CONNECTOR |
| 88220-19 | 19 | MANDREL CONNECTOR |
| 88220-20 | 20 | MANDREL CONNECTOR SCREW |
| 88060 | 21 | MANDREL CONTAINER |
| 88220-22 | 22 | AIR CONVEYOR |
| 88220-25 | 25 | SEAL B-094063/1 |
| 88220-26 | 26 | SEAL B-125094 |
| 88220-27 | 27 | ANTI-EXTRUSION RING |
| 88220-28 | 28 | VACUUM ADJUSTMENT LEVER |
| 88042 | 29 | PUSH BUTTON |



304 E