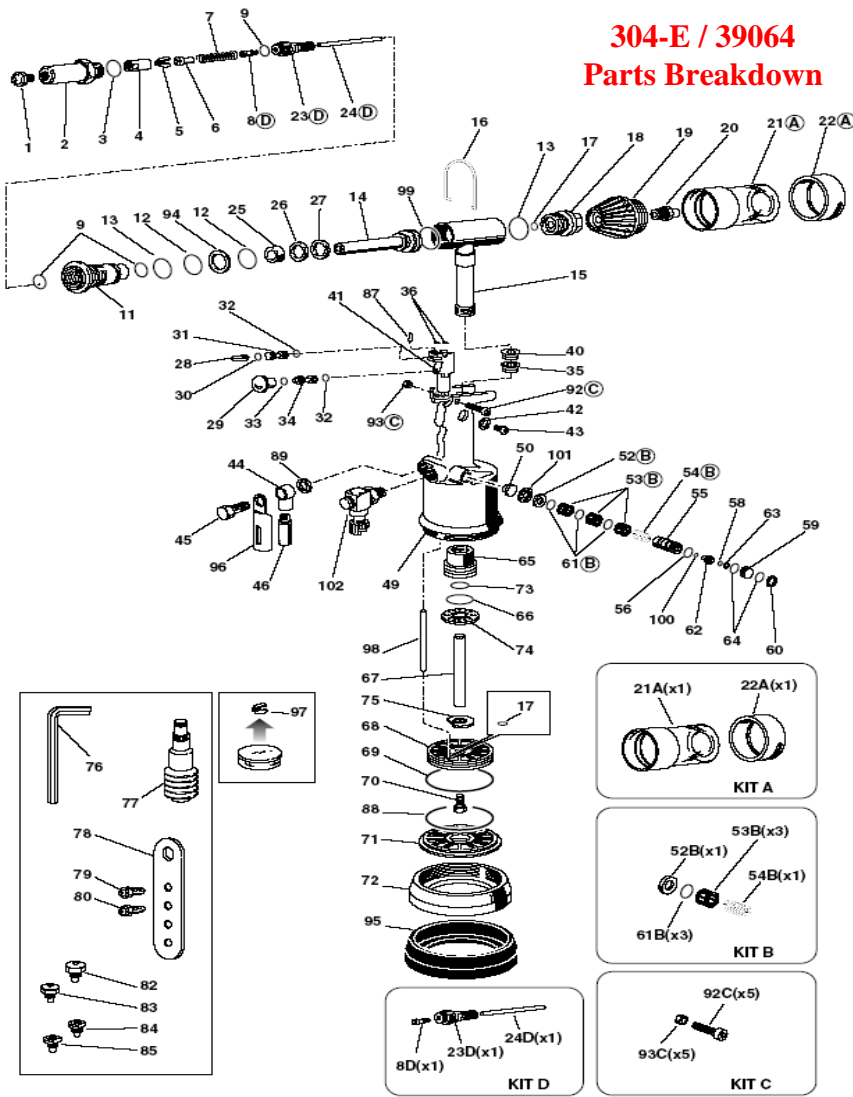


304-E / 39064 Parts Breakdown



Schematic #	Re-Order #	Description
1	88220-1	3/16" standard nosepiece
2	88220-2	head carrying nozzle
3	88220-3	o ring 2-21 parker
4	88220-4	Front jaw holding
5	88220-5	Jaws (3 piece)
6	88220-6	jaw pusher
7	88026	jaw return spring
8	88220-8	suction tube
9	88220-9	o ring 2-114 parker
10	No p/n yet	cone holder
10	88220-10	cone holding head assembly
11	88220-11	front connector
12	88220-12	o ring 2-121 parker
13	88010	o ring 2-124 parker
14	88220-14	oil-dynamic piston
15	88220-15	oil-dynamic cylinder
16	88220-16	balancer hook
17	88032	o ring 2-109 parker
18	88220-18	back connector
19	88220-19	container connector
20	88220-20	out put connector
21	88060	nails container
22	88220-22	air conveyor
24	No p/n yet	expeller tube
25	88220-25	balsele b-094063/1
26	88220-26	balsele b-125094
27	88220-27	anti-extrusion ring
28	88220-28	levetta for inlet opening
29	88042	push-button
30	88220-30	o ring 2-3 parker
31	88220-31	valve piston
32	88047	o ring 2-5 parker
33	88043	o ring 2-4 parker
34	88220-34	valve piston
35	88220-35	gasket ts14x22x5.8
36	88220-36	o ring 2-8 parker
40	88068	balsele b086055
41	88220-41	long valve body
42	88034	hermetic washer 400-820
43	88035	oil tank plug
44	88038	connector 2023-1/4-1/4
45	88088	connector 1631-01-1/4
46	88033	silencer 1/4
49	88220-49	tool body
50	88220-50	cap
52	88029	valve spacer
53	88027	casing
54	88126	coil return spring
55	88025	coil
56	88024	o ring 2-15 parker
58	88021	o ring 5-612 parker
59	88019	spring guide plug
60	88017	seeger ring 22 I
61	88028	o ring 2-115 parker
62	88022	valve piston
63	88020	seeger ring 11 I
64	88018	o ring 018 dowty
65	88220-65	guide stem connector
66	88220-66	o ring 2-129 parker
67	88220-67	stem
68	88220-68	pneumatic piston
69	88220-69	o ring 2-343 parker
70	88320	screw m10x1
71	88220-71	bottom
72	88220-72	cylinder cover
73	88327	o ring 2-113 parker
74	88325	dampener
75	88220-75	washer piston
76	88085	key
77	88084	oil container
78	88220-78	key
79	88220-79	nosepiece for rivet 6/6.40mm
80	88220-80	1/4" Standard Nosepiece
82	88220-82	3/16" structural nosepiece
83	88220-83	1/4" structural nosepiece
84	88220-84	1/4" nosepiece recessed structural rivet
85	88220-85	3/16" nosepiece recessed structural rivet
87	88220-87	pin Ina 2x11.8
88	88220-88	o ring 2-45 parker
89	88220-89	safety washer S 12.7
92	88220-92	screw tce m3 x 20 unl 5931
93	88220-93	nut m3 unl 5587-68
94	88220-94	parbak 8.121
95	88220-95	protection bottom
96	88097	outside silencer protection
97	88220-97	structural jaws 3 pcs
98	88220-98	tube 8x7
99	88220-99	o ring 2-121 parker
100	88045	o ring 008 d
101	88030	washer stopping spring
102	88100	rotating connector
	740819	Kit A
	74084	Kit B
	742144	Kit C
	741262	Kit D